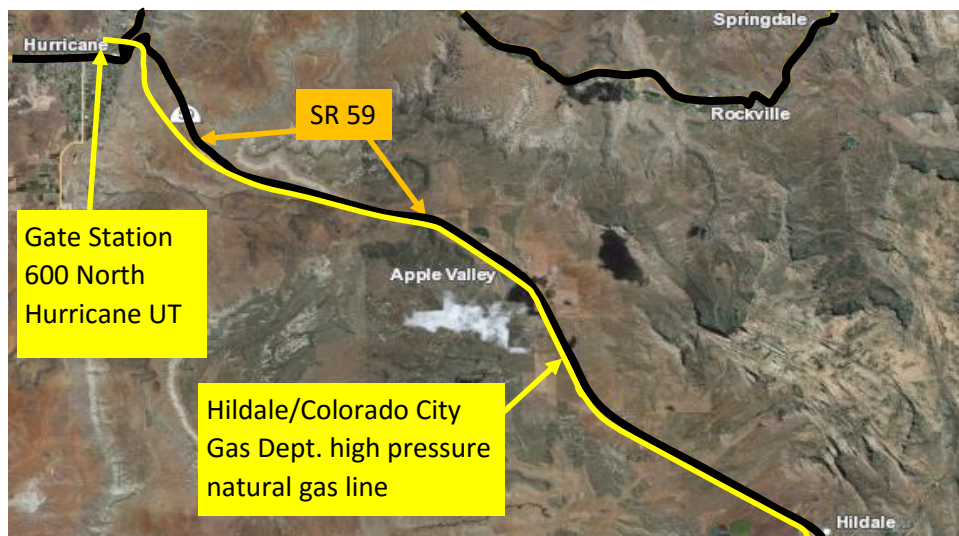




Located on the border of Washington County UT, and Mohave County AZ, Hildale/Colorado City Gas Department has been serving the community with natural gas and propane since 2001.

The department takes delivery of natural gas from Questar at their Gate Station on 600 North in Hurricane Utah. Natural gas is then transported to Hildale through a high pressure transmission line following SR 59. It is then distributed by a low pressure distribution system.

Propane is delivered by truck into storage tanks in Hildale and distributed by low pressure underground distribution system and by delivery truck.



In the event of a suspected gas emergency:

- Call 911
- Contact the line Operator 435-467-1160
- Isolate area and restrict entry to
 - Trained emergency personnel
 - Designated pipeline company employees
- Avoid explosion hazards
 - Potential ignition sources include electrical motors, firearms, vehicles, telephones, static electricity, open flames or sparks
 - Avoid forced ventilation of structures and excavations. Forced ventilation can actually increase the possibility of a flammable atmosphere.
- If the gas is on fire, let the escaping gas burn
- Do not operate the valves yourself. Only pipeline company employees should operate valves to isolate the emergency.

Know what's below.
Call 811 before you dig.

